

Turtle results until 3rd order for DESIR-HRS

- ∨ Two configurations calculated
 - ∅ Symmetric C135° with triplet to vanish R26
 - ∅ Asymmetric C135°



Symmetric C135° with triplet to vanish R26

R1 matrix at symmetric C135° focal plane

-1.00240	-0.00111	0.00000	0.00000	0.00000	-511.18701
-4.49321	-1.00244	0.00000	0.00000	0.00000	*****
0.00000	0.00000	0.99994	0.00004	0.00000	0.00000
0.00000	0.00000	0.00875	0.99994	0.00000	0.00000
11.47093	5.11187	0.00000	0.00000	1.00000	5.19577
0.00000	0.00000	0.00000	0.00000	0.00000	1.00000

R1 matrix at triplet focal plane

0.39798	0.00517	0.00000	0.00000	0.00000	197.52646
5.80665	2.58769	0.00000	0.00000	0.00000	-0.03962
0.00000	0.00000	-0.27889	0.39798	0.00000	0.00000
0.00000	0.00000	-2.83043	0.45398	0.00000	0.00000
11.47093	5.11187	0.00000	0.00000	1.00000	6.29577
0.00000	0.00000	0.00000	0.00000	0.00000	1.00000

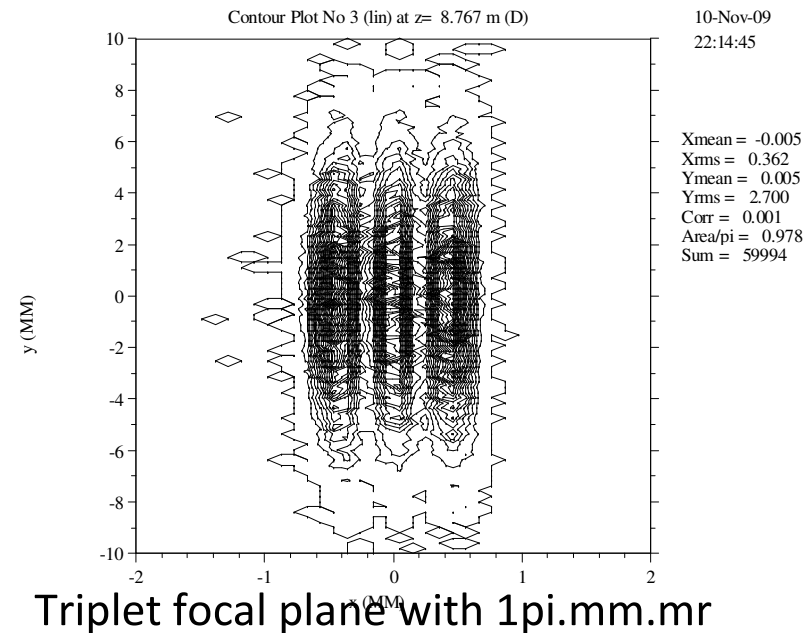
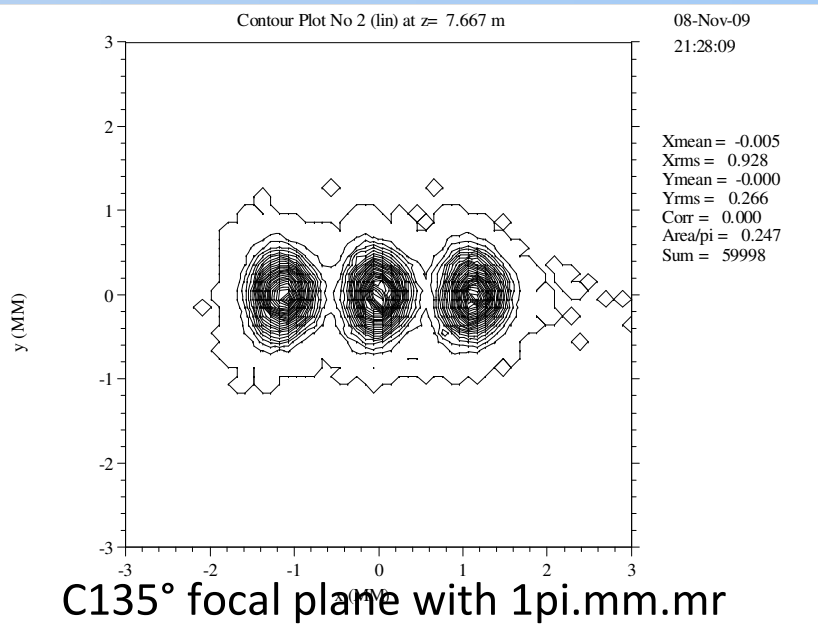
Asymmetric C135° with R26 vanished

R1 matrix at asymmetric C135° focal plane

0.49301	-0.00053	0.00000	0.00000	0.00000	204.50255
4.80294	2.02310	0.00000	0.00000	0.00000	-0.03119
0.00000	0.00000	25.85550	3.95311	0.00000	0.00000
0.00000	0.00000	-0.00304	0.03821	0.00000	0.00000
9.82286	4.13753	0.00000	0.00000	1.00000	6.98778
0.00000	0.00000	0.00000	0.00000	0.00000	1.00000

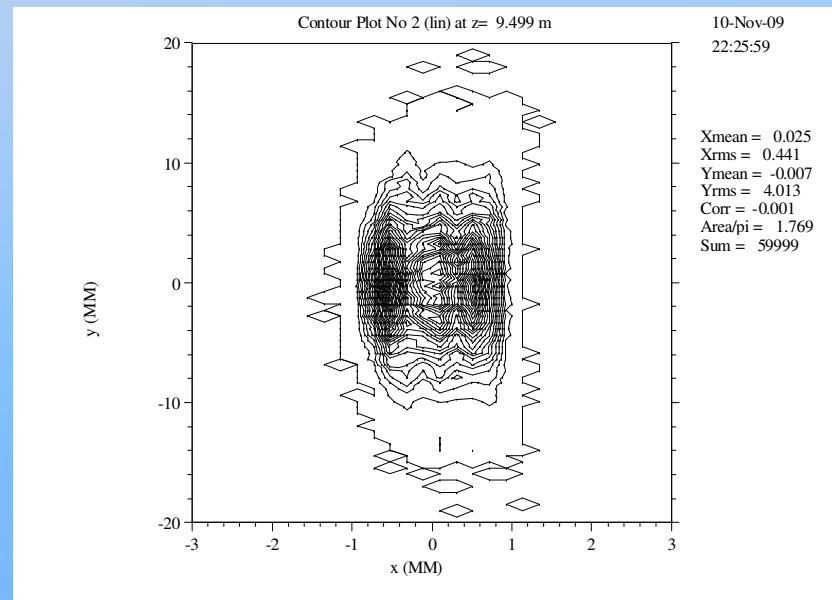
Symmetric C135° with triplet to vanish R26

- Raytracing of 20000 rays at 20000 of resolution.
- Fringe fields for magnets and quadrupoles



Asymmetric C135°

- Raytracing of 20000 rays at 20000 of resolution.
- Fringe fields for magnets and quadrupoles



focal plane with 1pi.mm.mr

Summery

	1pi_C135°	1pi_C135°_T	1pi_VLO	3pi_C135°	3pi_C135°_T	3pi_VLO
Transmission	98%	94,5%-67%	88,5%	66%	67,7%	73%
Cross contamination	4,3‰	1%-2‰	4,7%	5,2%	5,4%	10,7%

$\delta\rho/\rho$: 1E-5

Fentes C135°:±0,5mm

C135°_T:±0,2mm-±0,1mm

C135°_VLO:±0,25mm